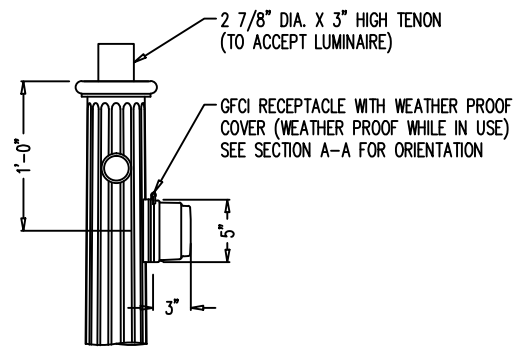
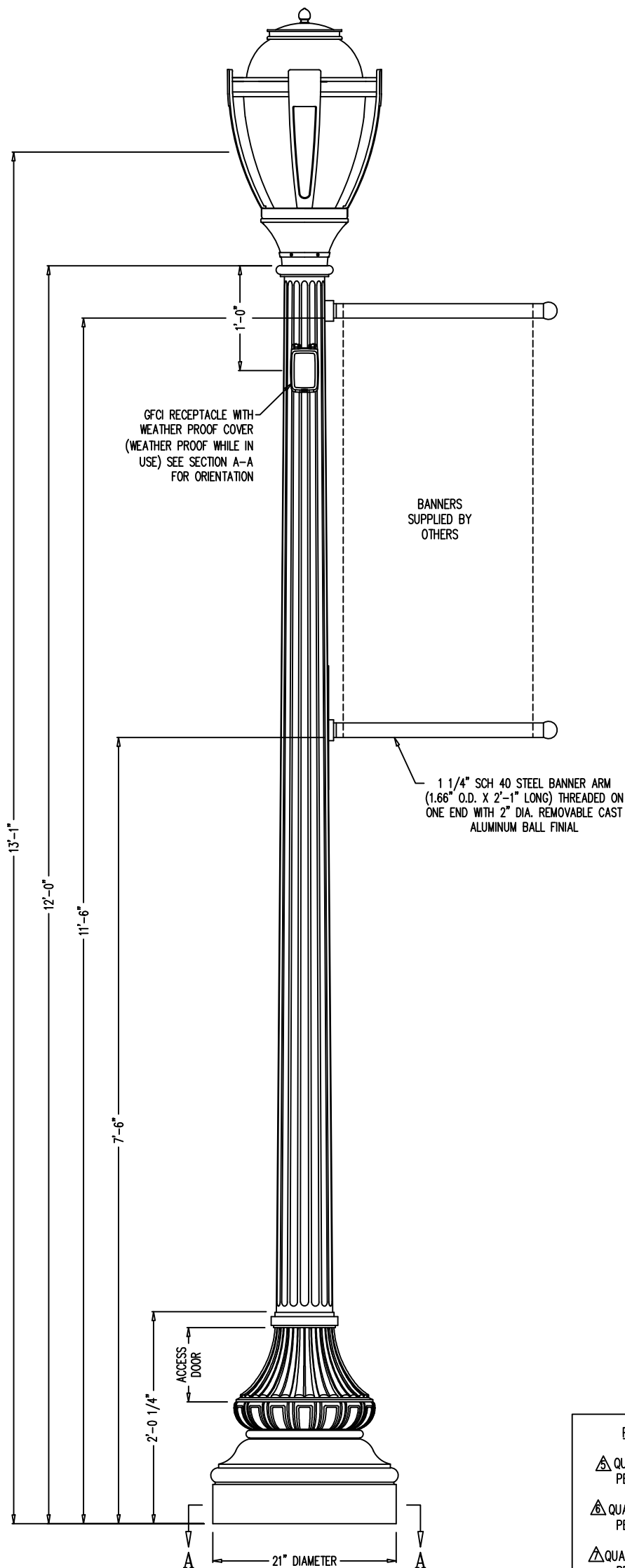


This drawing is property of Spring City Elect. Mfg. and is issued to the recipient with the understanding that it shall not be copied, duplicated, passed on to unauthorized parties, nor used for any purpose other than that for which it is specifically furnished except with Spring City's written permission.

**TYPE H: COLFAX BUSINESS
IMPROVEMENT DISTRICT (CBID)**



DETAIL "A"
SIDE VIEW OF RECEPTACLE COVER



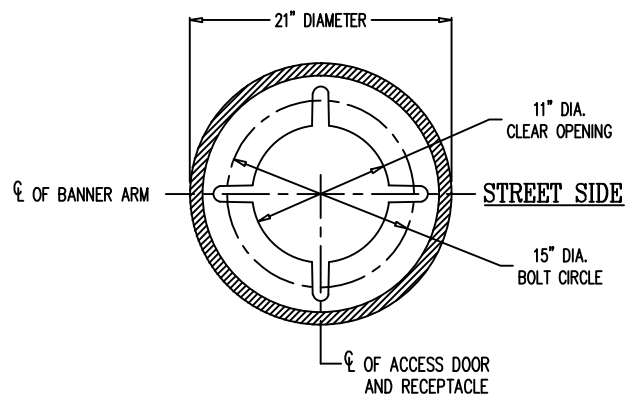
LUMINAIRE SPECIFICATIONS

STYLE: LED FRANKLIN SQUARE - MODIFIED (M19)
 HEIGHT: 27 1/2"
 WIDTH: 17 5/8"
 MATERIAL: CAST ALUMINUM ALLOY A.N.S.I. 356, PER A.S.T.M. B26-95
 GLOBE: ROTATIONALLY SANDED POLYCARBONATE
 FINISH: PRIME PAINT THEN FINISH SHERWIN WILLIAMS ACROLON TO MATCH FEDERAL GREEN (RAL # 6012)
 LAMPING: Δ 40 WATT LED
 VOLTAGE: ELECTRONIC WIRED AT 120 VOLTS
 COLOR TEMP: 5000K
 DISTRIBUTION: Δ TYPE III (ASYMMETRIC DISTRIBUTION)
 CATALOG NO.: Δ ALMFKS-LE040/EV1/X2-50-CR3-PKSF-FAC-CT-M19-CW

LAMP POST SPECIFICATIONS

STYLE: WASHINGTON WITH STRAIGHT TOP
 HEIGHT: 12'-0"
 PHOTOMETRIC CENTER: 13'-1"
 BASE: 21" DIAMETER
 MATERIAL: ONE PIECE, CAST DUCTILE IRON PER A536-84 GRADE 65-45-12
 FINISH: PRIME PAINT THEN FINISH SHERWIN WILLIAMS ACROLON TO MATCH FEDERAL GREEN (RAL # 6012)
 ACCESS DOOR: LOCATED IN BASE SECURED WITH TAMPER PROOF HEX SOCKET SECURITY MACHINE SCREWS
 GROUND PROVISIONS: DRILL AND TAP INSIDE WALL OF BASE OPPOSITE ACCESS DOOR TO ACCOMMODATE A 1/4"-20 GROUND STUD (GROUND STUD SUPPLIED BY OTHERS)
 ANCHOR BOLTS: (4) 3/4" DIA. X 24" LONG + 3" HOOK (FULLY GALVANIZED WITH 1 GALVANIZED NUT AND 1 GALVANIZED WASHER PER BOLT)
 BOLT PROJECTION: 3" REQUIRED
 TENON: 2 7/8" DIA. X 3" HIGH (TO ACCEPT LUMINAIRE)
 CATALOG NO.: DPSWSH-21-12.00-TN2.88/3.00-323/1NW-(2)BN-GFW-CW

Δ QUANTITY 44 REQUIRED
 LESS ANCHOR BOLTS
 PLUS 2 SPARE FIXTURE ONLY REQUIRED
 PER S.O. #: 015108



SECTION A-A
BASE PLATE DETAIL AND
ORIENTATION INFORMATION

Δ REVISED BY: J.K.M.	DATE: 03-10-2015
Δ REVISED BY: B.K.R.	DATE: 02-13-2015
Δ REVISED BY: B.K.R.	DATE: 11-25-2013
Δ REVISED BY: D.J.C.	DATE: 09-11-2013
Δ REVISED BY: M.W.G.	DATE: 04-25-2013



Spring City Electrical Mfg. Co.

HALL AND MAIN STREETS - P.O. BOX 19 - SPRING CITY, PA. 19475
 PHONE (610) 948-4000 - FAX (610) 948-5577 - WWW.SPRINGCITY.COM

PROJECT HISTORY

Δ QUANTITY ... 1 REQ'D PER S.O. # 013207
Δ QUANTITY ... 1 FIXTURE PER S.O. # 013520
Δ QUANTITY ... 2 FIXTURES PER S.O. # 013669
Δ QUANTITY ... 1 FIXTURES PER S.O. # 015073

DESCRIPTION	THE WASHINGTON #12 STANDARD LAMP POST WITH THE LED FRANKLIN SQUARE (M19) LUMINAIRE		
CUSTOMER	Δ COLORADO LIGHTING INC.		
JOB	Δ LED FIXTURE (EAST COLFAX, CO)		
SCALE	DRAWN BY:	DATE	DRAWING NO.
N.T.S.	B.K.R.	06-02-2011	LP-28116